

IF YOU SEEK TO LEARN AND
JOIN IN COMMUNITY...

4D LEARNING COMMUNITY



OVERVIEW

The 4D Learning Community offers both faculty and staff educators the opportunity to develop a deep understanding of students' needs and best practices in holistic student learning and development; inclusive curricular and co-curricular design; and assessment of teaching and learning in line with the four dimensions (4D) of advancing intellectual growth, exploring character, promoting well-being, and pursuing careers and lives of purpose.

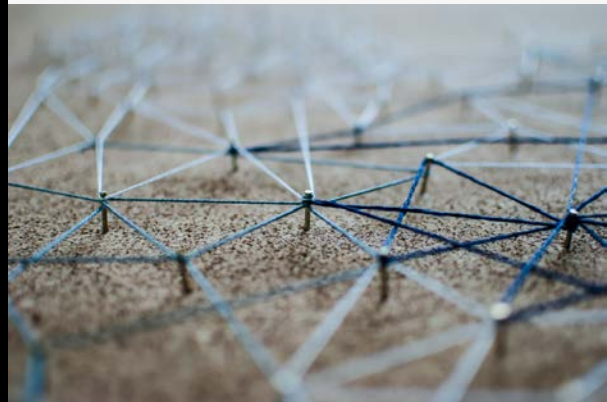
DESCRIPTION

The 4D Learning Community brings together faculty, staff, and administrators around our institutional purpose to support holistic learning and development for all students through the lens of the 4D.

Given the porous nature of the 4D, the learning community will focus on fostering this integration and considering how an integrative, intentional model best supports student learning and development.

Facilitated by the Faculty and Staff Co-Directors of the 4D Experience, the 4D Learning Community will progress through ten sessions focused on the educational design elements central to the 4D. These sessions will be co-led by critical curricular and co-curricular partners to highlight how we can work together to support holistic learning and development and take an integrated approach to teaching, learning, and programming. Topics will include the public good; justice, equity, diversity, and inclusivity; inclusive teaching and learning; integrative learning and high-impact practices; global learning; mentoring; and career development.

The 4D Learning Community directly supports Chancellor Haefner's Strategic Imperative to help students thrive academically, personally, and professionally during their time at DU and beyond.



QUESTIONS?

CONTACT:

Dr. Laura Sponsler
4D Faculty Co-Director
laura.sponsler@du.edu

Dr. Laura Perille
4D Staff Co-Director
laura.perille@du.edu



COMMITMENT

The community will meet ten times in Winter and Spring 2022 on Thursdays from 11:30 am - 1 pm (lunch will be served).

As part of their participation, each member of the learning community will be asked to update a syllabus/program proposal in line with the 4D model, demonstrating a new or reimagined integration of the four dimensions into their pedagogy or practice in further support of student learning and development. Participants will submit their 4D updated materials to the 4D Co-Directors in June; upon completion, they will receive a \$500 stipend. Participants will also be invited to present at the 4D Symposium in Spring 2022.



TOPICS

- Inclusive Teaching and Assessment
- Integrative Learning and HIPs
- Justice, Equity, Diversity, and Inclusion
- Public Good
- Global Learning
- Mentorship
- Meaningful Connections to Career
- Reflection

APPLICATION

Any appointed faculty member or full-time staff member may apply for the 4D Learning Community. **Applications must be submitted via Qualtrics (QR code below) by noon on Dec. 1, 2021.** Selected participants will be notified by mid-December.

Application components include:

- Name, Email, Title, Division/Department/Unit
- Statement on the 4D** (max. 400 words): Please share your vision for holistic, integrative learning and development in your field/program/area as it relates to the 4D.
- Statement on Goals** (max. 250 words): What course/program do you hope to reimagine or update as part of this learning community? What design elements or values of the 4D are you looking to integrate into your course/program? (we recognize these goals may shift as you engage in the learning community)

Selection criteria include:

- Commitment to the 4D as an integrated, holistic model for student learning and development.
- Goals for enhancing student learning and development in one's program/area through the lens of the 4D.
- Faculty/staff representation across departments/units on campus.

